

STANDARD DEPARTURE CHART - INSTRUMENT (SID)

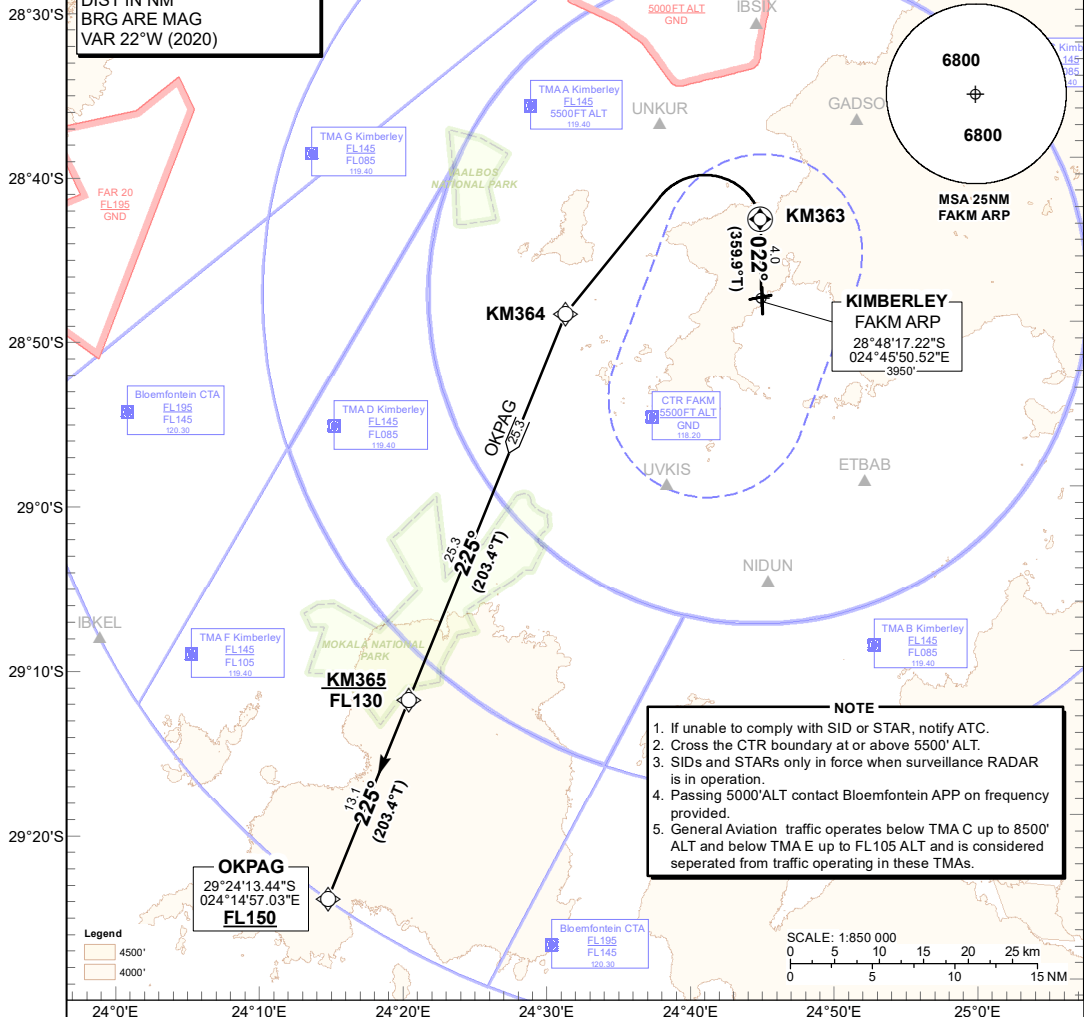
TRANSITIONAL ALTITUDE
7000'
TRANSITIONAL LEVEL
ATC

KIMBERLEY TWR: 118.20
APN: 122.65
APP: 119.40
BLOEMFONTEIN APP: 124.30

**KIMBERLEY
RNAV (GNSS) RWY 02**
OKPAG 1A

ELEV, ALT & HGT IN FEET
DIST IN NM
BRG ARE MAG
VAR 22°W (2020)

RNAV 1 REQUIRED



OKPAG 1A: RWY 02

Climb to FL150. Maintain RWY track 022°M to KM363. At KM363 turn left direct to KM364. At KM364 route to KM365 at FL130 or below. At KM365 route to OKPAG. At OKPAG set course as per flight plan.

Restricted to a minimum climb gradient of 4.0% until KM363.

4.0% @ 140KT IAS = 568 FPM
4.0% @ 160KT IAS = 649 FPM
4.0% @ 180KT IAS = 730 FPM
4.0% @ 200KT IAS = 811 FPM
4.0% @ 220KT IAS = 892 FPM

COMMUNICATION FAILURE PROCEDURE (Squawk 7600)

Comply with the OKPAG 1A RNAV (GNSS) SID. At OKPAG climb to flight plan level and set course as per flight plan.

Aircraft wishing to return to FAKM must continue as per the OKPAG 1A SID. At OKPAG turn right to IBKEL. At IBKEL comply with the IBKEL 1A RNAV (GNSS) STAR RWY 02 Communication Failure Procedure.

CHANGE: NEW Procedure

EFF: 13 AUG 20

SOUTH AFRICAN



CIVIL AVIATION AUTHORITY

DEP-02

RNAV (GNSS) DEPARTURE FROM FAKM RWY 02 TO OKPAG													
Serial Number	Path Descriptor	Waypoint Identifier	Latitude	Longitude	Flyover	Turn Direction	Bearing °M (°T)	Distance (NM)	Altitude (FT)	Speed (KT IAS)	VPA/TCH	Magnetic Variation	Navigation Specification
10	IF	KM1DR	28°47'27.4440"S	024°45'54.3530"E	-	-	-	-	-	-	-	21.76	RNAV 1
20	CF	KM363	28°43'25.0831"S	024°45'53.7029"E	Y	L	022 (359.9)	4.03	-	-	-	21.76	RNAV 1
30	DF	KM364	28°48'59.8084"S	024°32'19.8679"E	-	L	-	-	-	-	-	21.76	RNAV 1
40	TF	KM365	29°12'13.6719"S	024°20'53.6192"E	-	-	225 (203.4)	25.25	-13000	-	-	21.76	RNAV 1
50	TF	OKPAG	29°24'13.4422"S	024°14'57.0255"E	-	-	225 (203.4)	13.05	+15000	-	-	21.76	RNAV 1
60	TF	IBKEL	29°07'58.9157"S	023°59'33.9043"E	-	-	342 (320.35)	21.06	-	-	-	21.76	RNAV 1

* Communication Failure Waypoint

* RNAV 1 REQUIRED

CHANGE: NEW